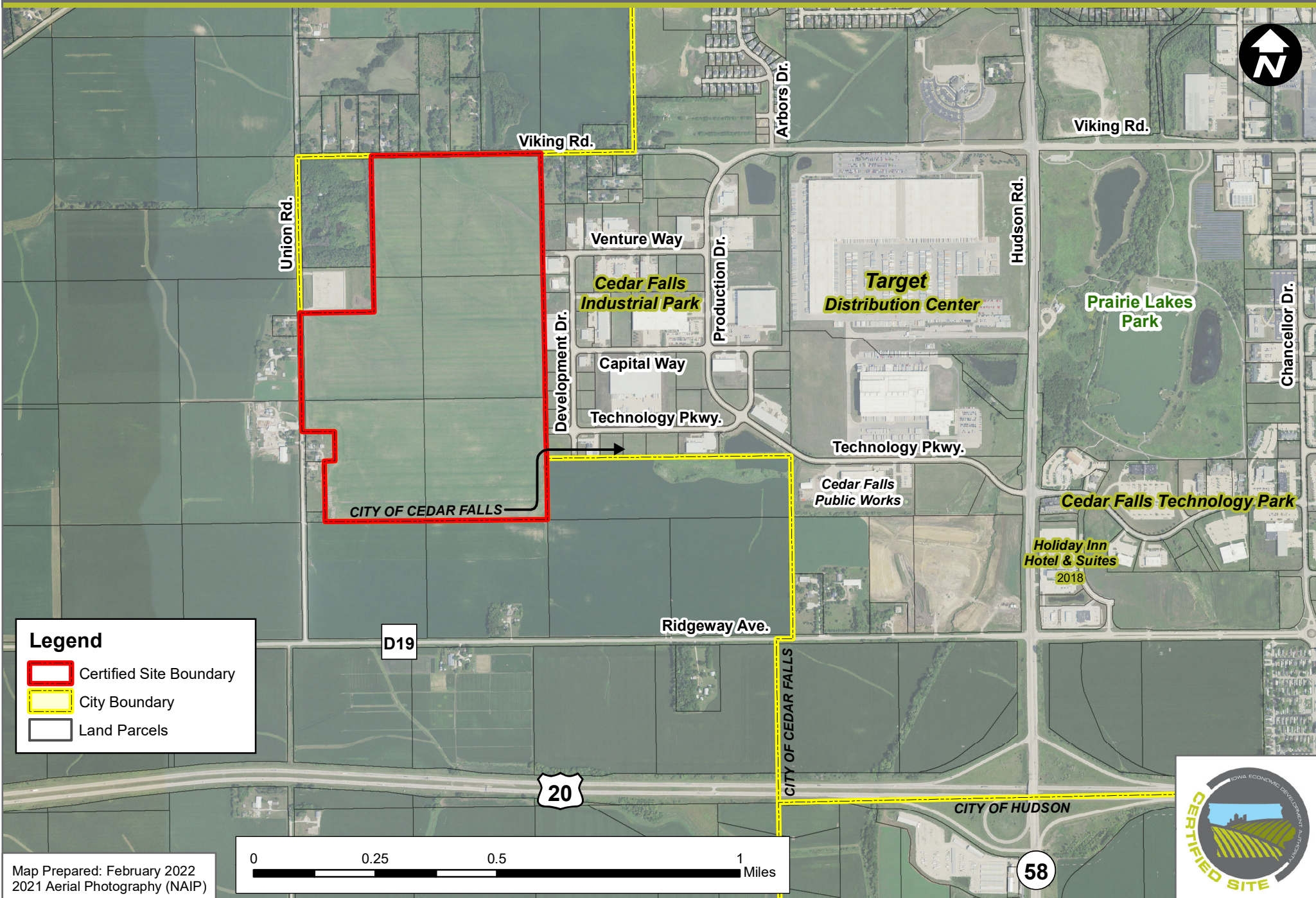





WEST VIKING ROAD INDUSTRIAL PARK

CEDAR FALLS, IOWA - AERIAL PHOTOGRAPH

(204.68 ACRES)



Legend

-  Certified Site Boundary
-  City Boundary
-  Land Parcels

Map Prepared: February 2022
2021 Aerial Photography (NAIP)

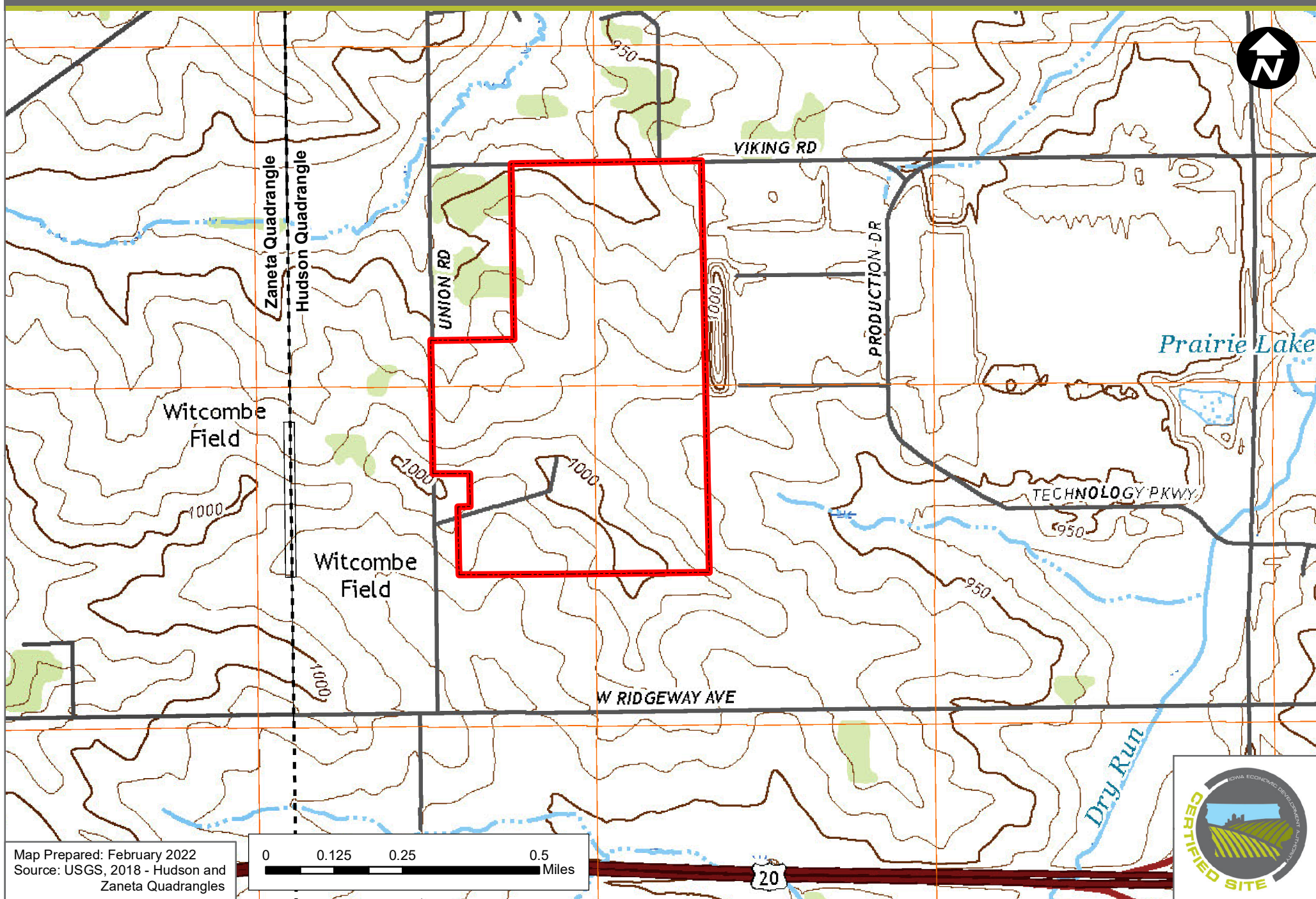
0 0.25 0.5 1 Miles



WEST VIKING ROAD INDUSTRIAL PARK

(204.68 ACRES)

CEDAR FALLS, IOWA - USGS QUADRANGLE MAP



WEST VIKING ROAD INDUSTRIAL PARK

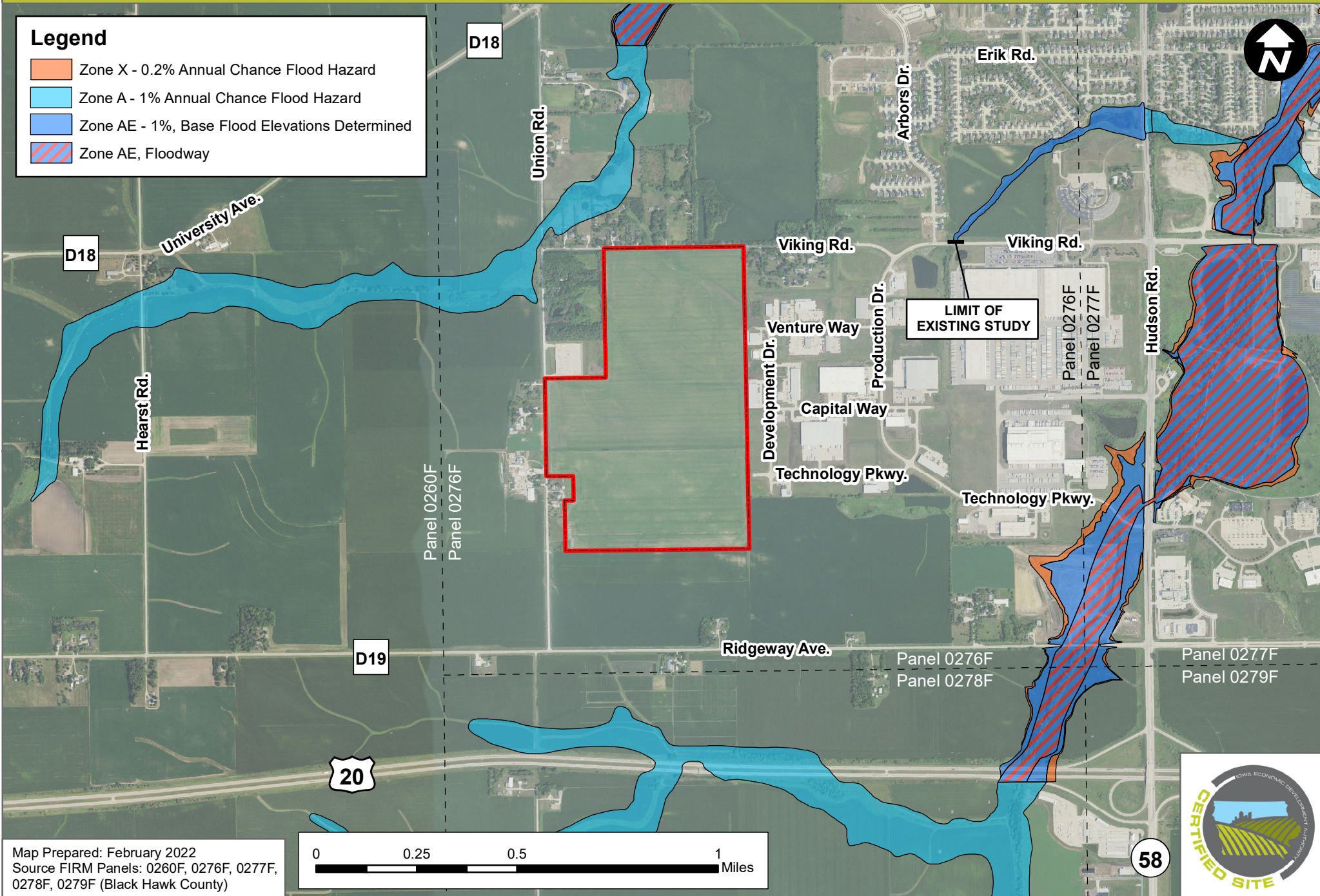
CEDAR FALLS, IOWA - FEMA FLOODPLAIN MAP

(204.68 ACRES)



Legend

- Zone X - 0.2% Annual Chance Flood Hazard
- Zone A - 1% Annual Chance Flood Hazard
- Zone AE - 1%, Base Flood Elevations Determined
- Zone AE, Floodway



Map Prepared: February 2022
Source FIRM Panels: 0260F, 0276F, 0277F,
0278F, 0279F (Black Hawk County)

0 0.25 0.5 1 Miles

58

WEST VIKING ROAD INDUSTRIAL PARK

CEDAR FALLS, IOWA - MASTER DEVELOPMENT PLAN

(204.68 ACRES)

