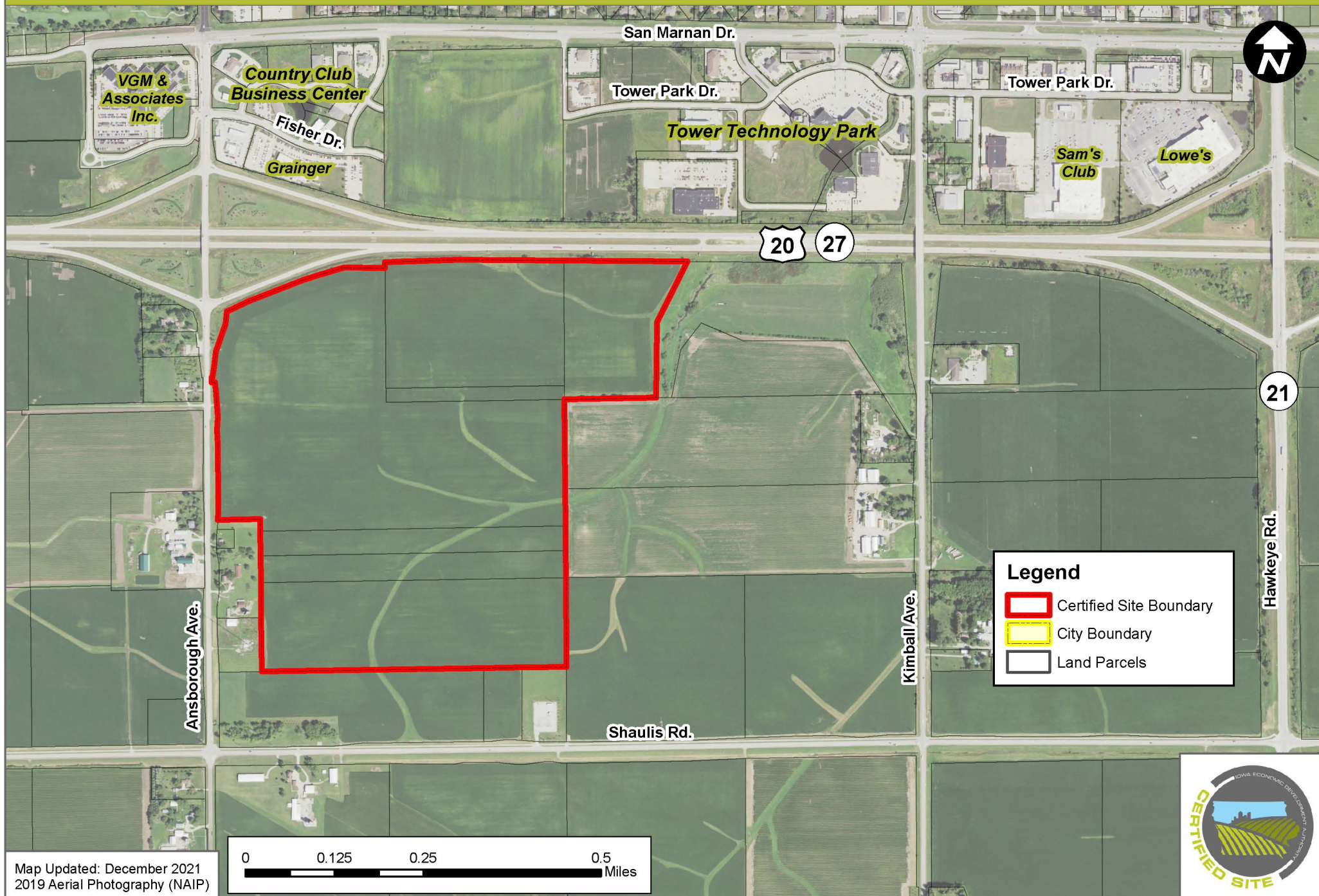
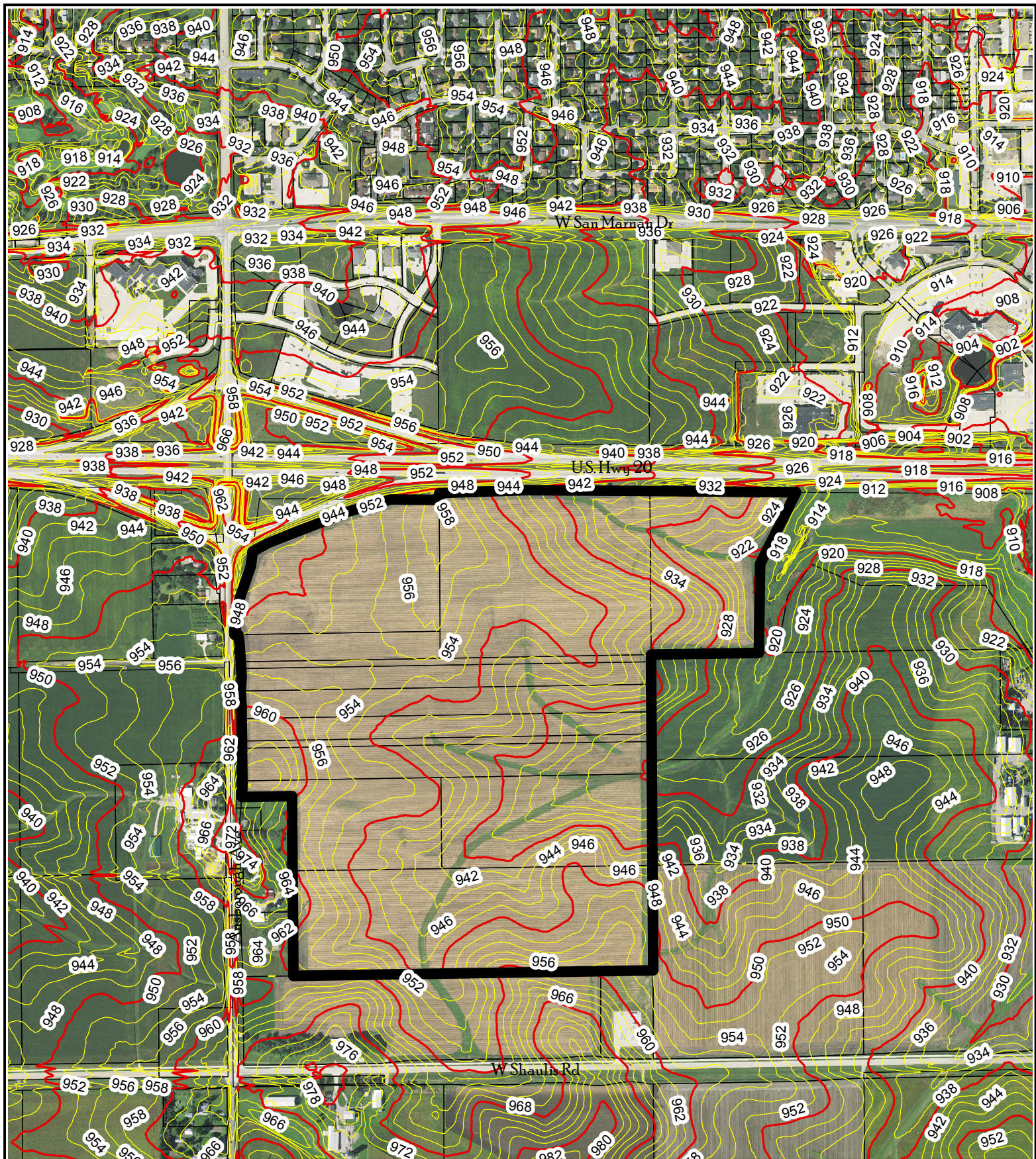


# SOUTH WATERLOO BUSINESS PARK (183.67 ACRES)

## WATERLOO, IOWA - AERIAL PHOTOGRAPH





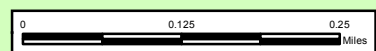


South Waterloo  
Business Park  
City of Waterloo, Iowa  
Contour Map

- 2 Foot Intervals
- 10 Foot Intervals
- Site Boundary



Note:  
Base map data source is Black Hawk County.  
This map does not represent a survey, no liability  
is assumed for the accuracy of the data delineated herein,  
either expressed or implied by Black Hawk County, the  
Black Hawk County Assessor, or their employees.  
The City of Waterloo makes no warranty, express or  
implied, as to the accuracy of the information shown  
on this map, and expressly disclaims liability for the  
accuracy thereof. Users should refer to official  
plats, surveys, recorded deeds, etc. located at the  
Black Hawk County Assessor's Office for complete  
and accurate information.





# SOUTH WATERLOO BUSINESS PARK (183.67 ACRES)

## WATERLOO, IOWA - FEMA FLOODPLAIN MAP

### Legend

- Zone X - 0.2% Annual Chance Flood Hazard
- Zone AE - 1% Annual Chance Flood Hazard, Base Flood Elevations Determined
- Zone AE, Floodway



Kimball Ave.

20 27

Panel 0284F

Panel 0303F

Ansborough Ave.

Shaulis Rd.

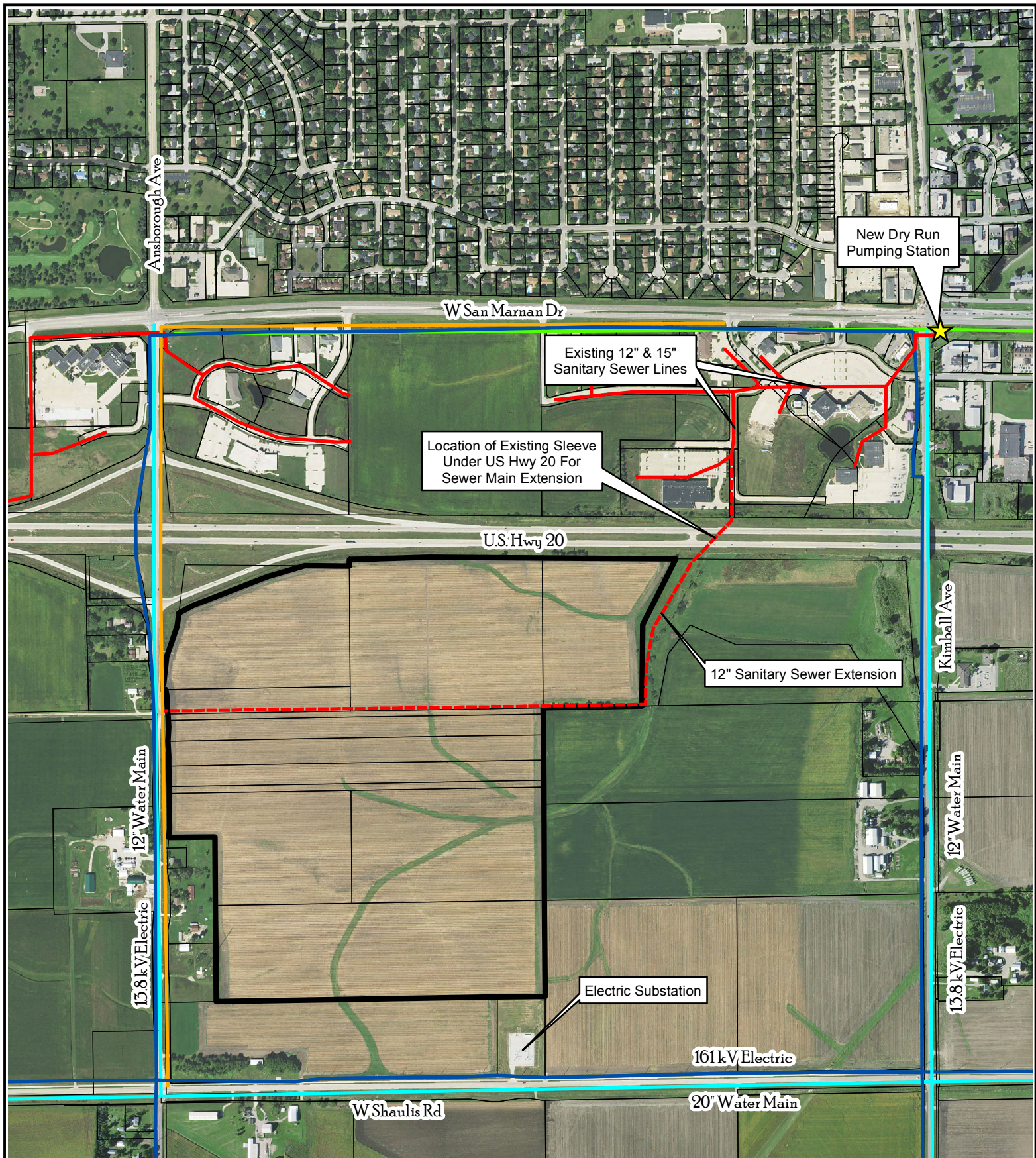
0 0.125 0.25 0.5 Miles

Map Updated: December 2021  
Source FIRM Panels: 0284F, 0303F (Black Hawk County)

LIMIT OF  
EXISTING STUDY







South Waterloo  
Business Park  
City of Waterloo, Iowa

Utility Infrastructure Map  
Water, Sewer, Fiber, Gas, Electric

- Sanitary Sewer ~ 12" - 15" Diameter Main
- Water Main ~ 20"/12" Diameter Ductile
- Fiber Optic ~ 204 Count Fiber
- Gas ~ 4" Plastic ~ 70 psig Pipe
- Electricity ~ 161kV ~ 13.8 kV Line
- Site Boundary



Note:  
Base map data source is Black Hawk County.  
This map does not represent a survey, no liability is assumed for the accuracy of the data delineated herein, either expressed or implied by Black Hawk County, the Black Hawk County Assessor, or their employees. The City of Waterloo makes no warranty, express or implied, as to the accuracy of the information shown on this map, and expressly disclaims liability for the accuracy thereof. Users should refer to official plats, surveys, recorded deeds, etc. located at the Black Hawk County Assessor's Office for complete and accurate information.

